



## Exploring our Industrial Past for Calderdale Council

Located on the Square Church site next to the Piece Hall, Halifax, a new Library and Archive will occupy land that has been unused for many years. The overall project will blend the remains of the Square Church into an iconic design linking it with the redeveloped Piece Hall.

Our part in this project was to carry out a programme of archaeological excavation on the burial ground associated with the land between the Square Church and Chapel.

The work demonstrated that the burials were in a well ordered burial ground with very little intercutting between the grave stacks.

We excavated, analysed and reported on over 200 skeletons from this Congregationalist population, with the burials dating from 1772 till sometime in the late 1850s or early 1860s. Several named individuals were identified through associated name plates, and evidence for early autopsies was uncovered.

These people lived and worked in Halifax at a time of great industrial and social change, and they provide a unique insight into this 18th and 19th-century town. Following analysis, the human remains were reburied by Calderdale Council Funeral Services.

Through regular liaison with the client and other contractors we were able to ensure successful project delivery on what was logistically a very complex project.



### Archaeological Services WYAS

t: 0113 3939746

e: [archaeology@wyjs.org.uk](mailto:archaeology@wyjs.org.uk)

Nepshaw Lane South, Morley, Leeds, LS27 7JQ

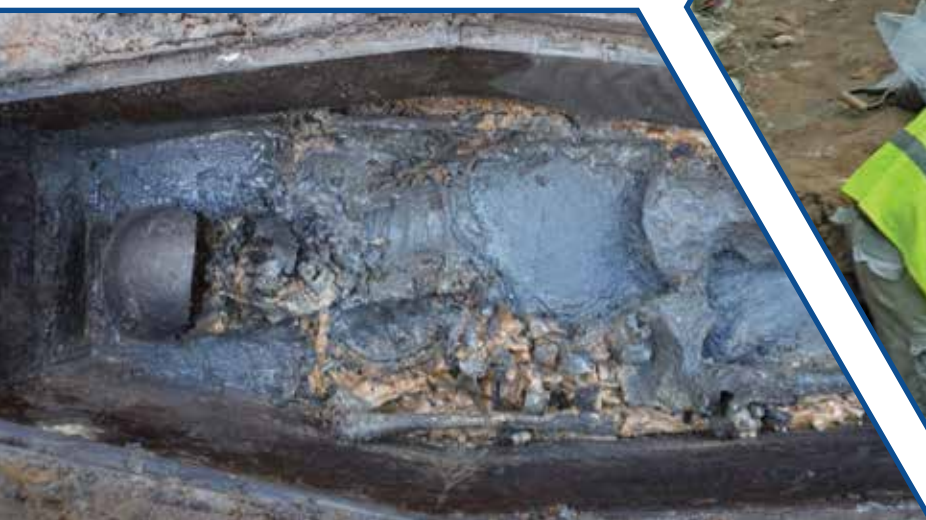
[www.aswyas.com](http://www.aswyas.com)



@AS\_WYAS



@ASWYAS1





# WYAS Archaeological Services

