



Easing the Congestion for Leeds City Council

Archaeological Services WYAS worked on the East Leeds Extension Transport Improvements which will connect the existing highway infrastructure to the M1.

We provided a geophysical survey, covering approximately 90 hectares, on agricultural land to the east of the city of Leeds. Through regular liaison with our client and a number of landowners we were able to ensure successful project delivery, on time and on budget.

Geophysical Survey is an efficient and effective way to investigate large tracks of land and assess the archaeological potential of a site without the need to dig. Archaeological Services are proficient in the use of ground penetrating radar, cart-based and hand-held magnetometers and earth resistance equipment. As a market leader in these techniques, we are continually improving and developing our service to bring our clients the best results.

The archaeological anomalies we identified in this survey east of Leeds indicate Iron Age and Roman enclosures, field systems and a trackway. Responses associated with post-medieval quarrying have also been identified. These results will help us to minimise the amount of excavation required before construction of the road begins.

Archaeological Services WYAS

t: 0113 3939746

e: archaeology@wyjs.org.uk

Nepshaw Lane South, Morley, Leeds, LS27 7JQ

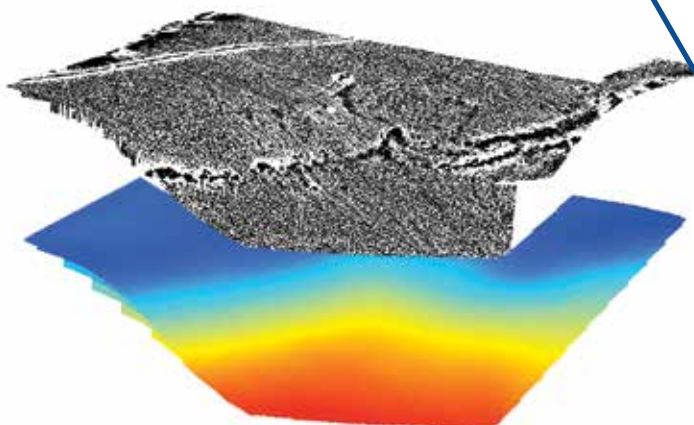
www.aswyas.com



@AS_WYAS



@ASWYAS1





WYAS Archaeological Services

